



FG ELITE SERIES BOOTHS

The Elite Series from Col-Met utilizes the benefits from two different styles of booth construction and combines them together into one unique product line – a hybrid concept of pairing a single-wall booth cabin with a double-wall front design. The Elite Series offers the same standard features and the same installation, operation and maintenance advantages as our popular EZ Series, but now in a finer grade (FG) of booth construction.

THE FG ELITE INCLUDES MANY BOOTH UPGRADES – ALL OFFERED AS STANDARD FEATURES.



UL & ETL LISTINGS

DOUBLE-WALL FRONTAL
Frontal walls are constructed of double-sided, 20-gauge, premium quality galvanized steel, with 2" of insulation and powder-coated white on both sides.

INTAKE PLENUM
Fabricated from 18-gauge galvanized, powder-coated steel. Insulated intake plenum (**optional**) is available to help reduce heat loss.



CONTROL PANEL
UL-listed digital power and control panel manages air makeup unit, exhaust fan, lighting, variable frequency drive (VFD), and (**optional**) energy-saver modes.

AIR MAKEUP UNIT
EZ Heat and Cure air makeup unit supplies conditioned and filtered air evenly throughout the booth. Capable of saving up to 40% in energy costs, our air makeup unit delivers enhanced fuel efficiency while effectively removing particulates from the air stream.

COL-MET FG ELITE SERIES BOOTHS

With our FG Elite Series refinishing booths and the rest of our line of ATR system offerings, we have diligently combined and packaged a select line of our products into the most energy-efficient, high-quality and environmentally-optimized systems specific to your finishing needs. We know that every shop operates differently, and we understand that each customer requires a different method of service to get the solution that works best for their products. Our ATR team knows how to ask the right questions, to get the right answers needed in order to build the most optimal system for your applications.

Col-Met Spray Booth Products comply with all applicable OSHA and NFPA regulations.



HINGED FILTER RACK

Equipped with an easy-to-change filter rack, the ATR FG booth comes supplied with one set of UL-rated, Class 2 filters for both the intake and exhaust racks.



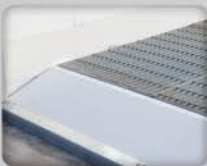
LIGHTS

Full-booth illumination is supplied from twelve inside access, UL-listed, four-tube, 48" long, 32-watt fluorescent light fixtures.



DOORS

Ridged pre-assembled door frame with pre-set door case hinge and heavy duty latches. Along with replaceable brass hinge-pin rings to maintain precision fit and heavy duty Trim-Loc seal and door anchor pins.



MINI-PIT (OPTIONAL)

Exclusive only to Col-Met, our 4.5" high mini-pit arrives pre-balanced with the air makeup unit for optimal finishing conditions.



Balancing plate configurations are done prior to shipping, allowing for faster and accurate installation. The ATR mini-pit can also be retrofitted to fit any booth configuration.

AVAILABLE OPTIONS



EVO Waterborne Flash-Off Systems



VS Waterborne Flash-Off Systems (variable speed)



FG ELITE SERIES BOOTHS

COL-MET SPRAY BOOTHS

Dallas, TX // e-mail: ATRgroup@colmetsb.com

Toll-free: 888.452.6684 // www.colmetsb.com/ATR

