



Industrial



Auto

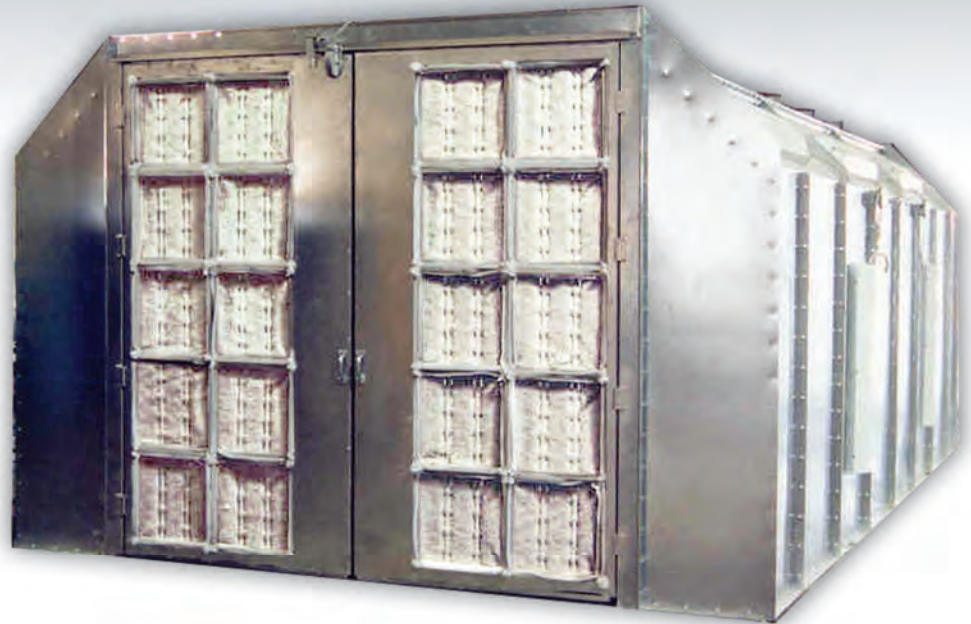
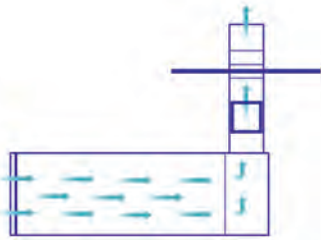


Wood



# EZ CLASSIC CROSSDRAFT

- EZ TO INSTALL
- EZ TO OPERATE
- EZ TO MAINTAIN
- EZ TO QUICK SHIP



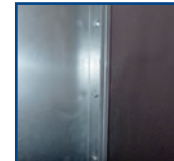
- Control panel and other electric components can be purchased separately
- ETL listed when optional when control panel is added



- Industry-leading light levels
- Spray booth specific, dual voltage T-8 32-watt light fixtures
- Quality brand-name tubeaxial fans and motors
- Air solenoid valve



- Windowed personnel access doors are pre-hung in a heavy gauge galvanized steel frame for easy installation.
- Product doors are field hung on slotted hinges to facilitate installation on uneven floors



- Constructed from 18 gauge, prime-quality steel
- All panels and support members are precision punched for easy nut and bolt assembly
- 5/16" bolt with self locking nuts

## OVERVIEW

The Col-Met EZ Crossdraft Booth intakes fresh air through filters in the product doors. The clean, filtered air is drawn through the booth and exhausted through a filter system at the opposite end. This type of spray booth makes efficient use of shop space, and is available in solid back, drive through and reverse flow designs. Reverse flow booths intake air through filters in the back wall. The solid-faced product access doors are at the exhaust end of the booth. This provides cleaner intake filtering and better control of shop dust that might be tracked in at the product entrance. This booth also available in either drive-through or solid back configurations.

## LIGHTING FEATURES

Bright, full booth illumination is provided by ten 48" four-tube, 32-watt fluorescent light fixtures in the angled ceiling panels and side walls. Each is sealed behind clear, tempered safety glass. All fixtures are UL listed and approved for their intended use and placement.



Industrial



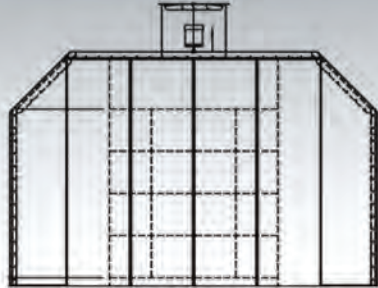
Auto



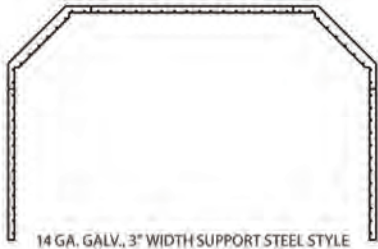
Wood



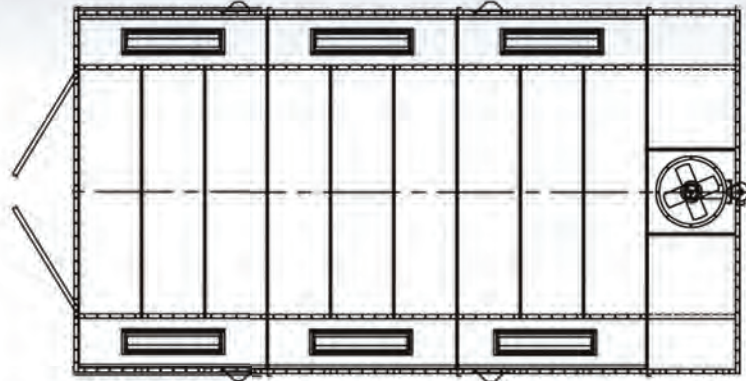
# EZ CLASSIC CROSSDRAFT



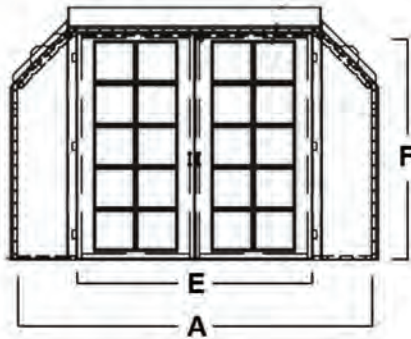
END VIEW @ CHAMBER



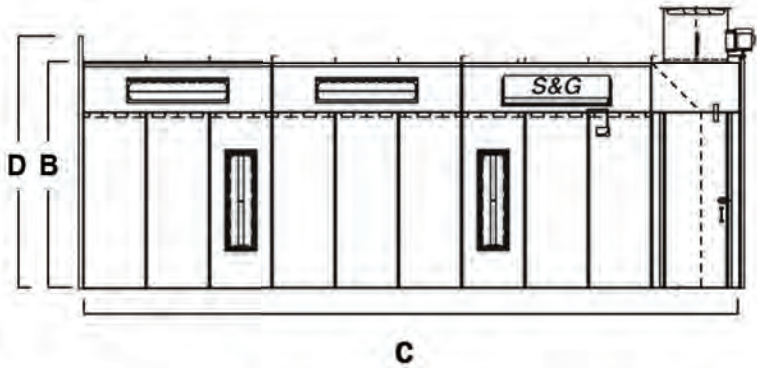
14 GA. GALV., 3" WIDTH SUPPORT STEEL STYLE



PLAN VIEW



FRONT VIEW



BOOTH SIDE VIEW

Model Number	Interior Dimensions			Exterior Dimensions			Access Doors	Nominal Door Opening				Lights		Air Flow SCFM	Fan Spec.		Filters	
	Width	Height	Length	Width	Height	Length		Width	Height	Qty	Type	Open	S&G		Dia.	HP	Int.	Exh.
ECC-14-09-26-N-SB	14'-0"	9'-0"	26'-0"	14'-6.5"	10'-0"	26'-4"	1	9'-4"	8'-10.5"	1	Filtered	9	1	12,600	30"	3HP	20	16
ECC-14-09-28-N-SB	14'-0"	9'-0"	28'-0"	14'-6.5"	10'-0"	28'-4"	1	9'-4"	8'-10.5"	1	Filtered	9	1	12,600	30"	3HP	20	16
ECC-14-09-30-N-SB	14'-0"	9'-0"	30'-0"	14'-6.5"	10'-0"	30'-4"	1	9'-4"	8'-10.5"	1	Filtered	9	1	12,600	30"	3HP	20	16
Reference Key	A	B	C		D			E	F									

Alternative Configurations: Reverse Flow (RF) Drive Through (DT)

Alternative Options: Pressurized (P)

Standard Length Sizing is Illustrated above

Actual Working Depth is 18 inches less than interior length.