



Industrial



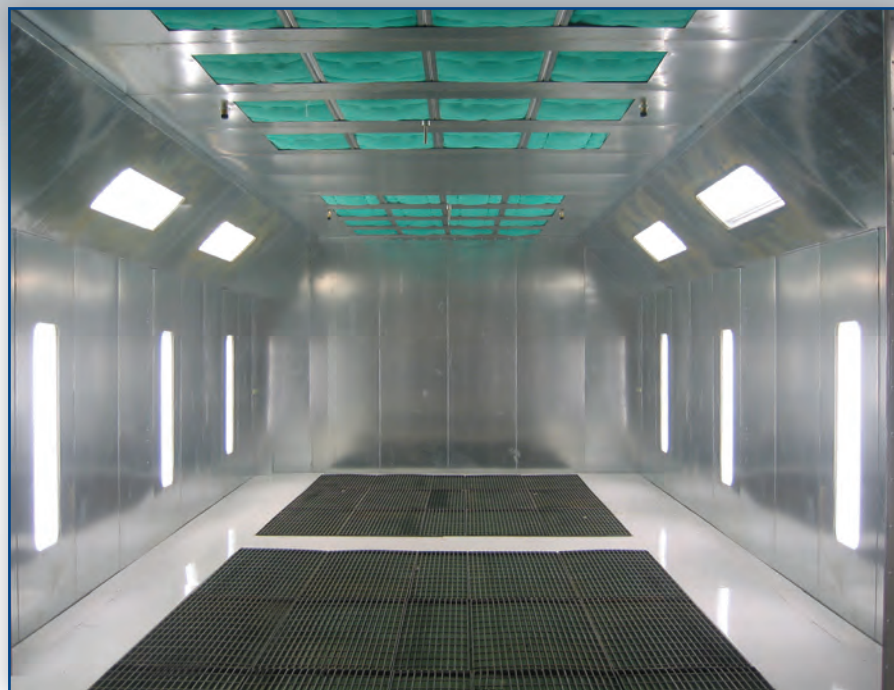
Auto



Wood

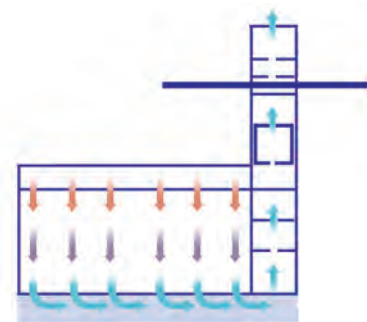


# EZ PIT DOWNDRAFT

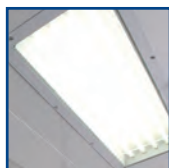


- EZ TO INSTALL
- EZ TO OPERATE
- EZ TO MAINTAIN
- EZ TO PRESSURIZE

BOOTH SHOWN WITH OPTIONAL ABOVE GROUND BASEMENT



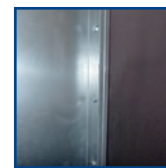
- Control panel and other electric components can be purchased separately
- ETL listed when optional when control panel is added



- Industry-leading light levels
- Spray booth specific, dual voltage T-8 32-watt light fixtures
- Quality brand-name tubeaxial fans and motors
- Air solenoid valve



- Windowed personnel access doors are pre-hung in a heavy gauge galvanized steel frame for easy installation.
- Product doors are field hung to facilitate installation on uneven floors



- Constructed from 18 gauge, prime-quality steel
- All panels and support members are precision punched for easy nut and bolt assembly
- 5/16" bolt with self locking nuts

## OVERVIEW

The EZ Pit Downdraft Booth takes in fresh air from the cleaner upper levels of the shop, through a filtered booth ceiling. The filtered air is drawn down and away from the product through exhaust filters in the pit located in the floor. This provides efficient overspray control that reduces prep time and also provides a much healthier workplace environment. An optional above ground basement exhaust plenum is available for installation without concrete work.

This booth can be purchased with a pre-filtered plenum or with a pressurized intake plenum. It can also be equipped with an air replacement unit and cure cycle to meet your requirements. The EZ Pit Downdraft Booth is available in either drive-through or solid back configurations.

## LIGHTING FEATURES

Bright, full booth illumination is provided by ten four-tube, 48", 32-watt fluorescent light fixtures in the angled ceiling panels and side walls. Each is sealed behind clear tempered safety glass. All fixtures are UL listed and approved for their intended use and placement.



Industrial



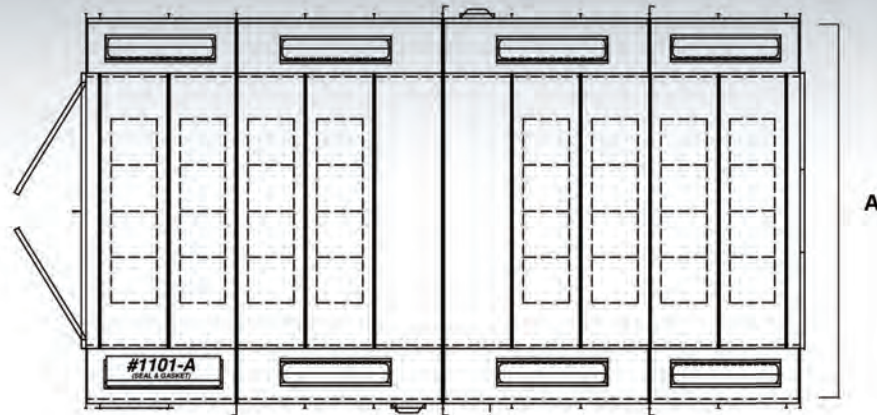
Auto



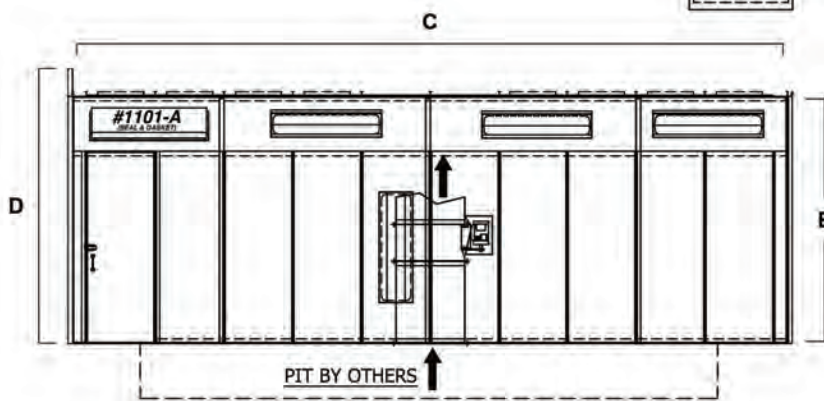
Wood



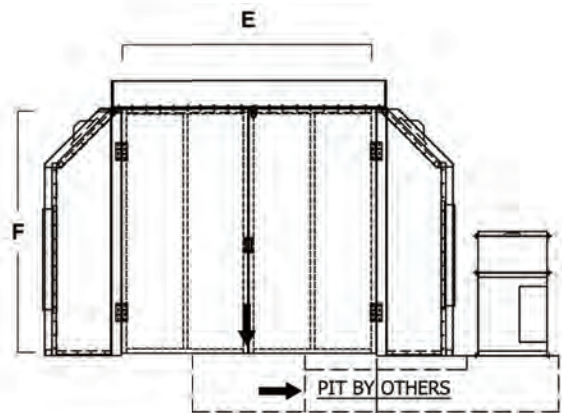
# EZ PIT DOWNDRAFT



PLAN VIEW



SIDE ELEVATION



END VIEW

Model Number	Interior Dimensions			Exterior Dimensions			Access Doors	Nominal Door Opening			Illumination			Air Flow SCFM	Fan Spec.		Filters		
	Width	Height	Length	Width	Height	Length		Width	Height	Qty	Type	S&G	Open		Total	Di.	HP	Int.	Exh.
EPD-14-09-26-N-SB	14'-0"	9'-0"	26'-0"	14'-10.5"	10'-0"	26'-4"	1	9'-4"	8'-10.5"	1	Solid	1	9	10	12,740	30"	3 HP	32	24
Reference Key	A	B	C		D			E	F										

Alternative Configurations: Drive Through (DT)  
 Alternative Options: Pressurized (P) Pre-Filtered (PF)  
 Standard Length Sizing is Illustrated above